



# Maths Home Learning Grid



In school we follow the scheme White Rose Maths and they have very kindly created lessons for you to use at home.

There has been a change to how each lesson is delivered, each lesson now only features a short video presentation. There are no worksheet type activities on the website, there is however a link to BBC Bitesize which has further explanations of the topic and questions to answer.

The link from White Rose will take you to the main BBC Bitesize Year group page. You will need to find the lesson which matches the topic.

Summer Term – Week 10(w/c 29<sup>th</sup> June)  
 Summer Term – Week 11(w/c 6<sup>th</sup> July)  
<https://whiterosemaths.com/homelearning/year-4/>

## Decimals, decimals, decimals 0.36!

Write the numbers shown and compare using < or >



Draw counters in the place value chart to make the statement correct.



Complete.

5.5	○	5.7	0.37	<	0.7
0.14	○	0.29	2.22	>	2.2
1	○	0.64	1.1	>	1.1
3.32	○	3.23	9.9	<	9.9

Place the numbers in descending order.















Challenge:  
 Can you multiply each number by 10 and 100?

## Decimals continued...

Use each digit card **once** to make the statement correct.



















3.□□ > □.□□

Challenge:  
 Can you find 8 different possible solutions?















Use three digit cards to make the greatest possible number.

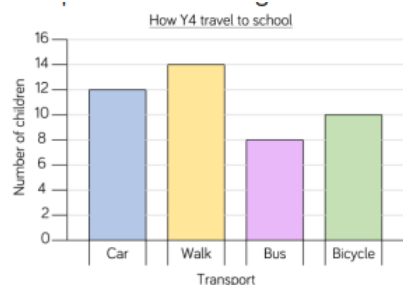
□.□□

Use three digit cards to make the smallest possible number.

□.□□

## Interpreting Charts

Complete the table using the information in the bar chart.



What is the most/least popular way to get to school?  
How many children walk to school?

Look at the pictogram and answer the questions below.

Team	Number of house points
Sycamore	4 circles and 1 half-circle
Oak	3 circles and 1 half-circle
Beech	3 circles and 1 quarter-circle
Ash	2 circles and 1 half-circle

● = 20 points

How many more points does the Sycamore team have than the Ash team?

How many points do Beech and Oak teams have altogether?

How many more points do Ash need to be equal to Oak?

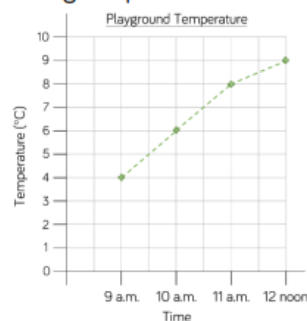
## Interpreting Charts

Watch and participate in the White Rose home learning (week 11), then visit

<https://www.bbc.co.uk/bitesize/articles/z9prsk7>

Watch the video and complete the 2 'Classroom secrets' activities which can be found underneath the video.

The graph shows the temperature in the playground during a morning in April.



The temperature at 9 a.m. is \_\_\_\_\_ degrees.

The warmest time of the morning is \_\_\_\_\_.



Don't forget to complete the 7 a day challenges!

You will notice that the 'extras' are now being repeated as we have completed all of them for the year! Please complete them again as it is good practise!

## Times Tables



It goes without saying, keep practising those tables!

## Angles, angles and more angles!

Can you fill in the blanks?

A right angle is \_\_\_\_\_ degrees.

Acute angles are \_\_\_\_\_ than a right angle.

Obtuse angles are \_\_\_\_\_ than a right angle.

Now have a go at labelling these angles!

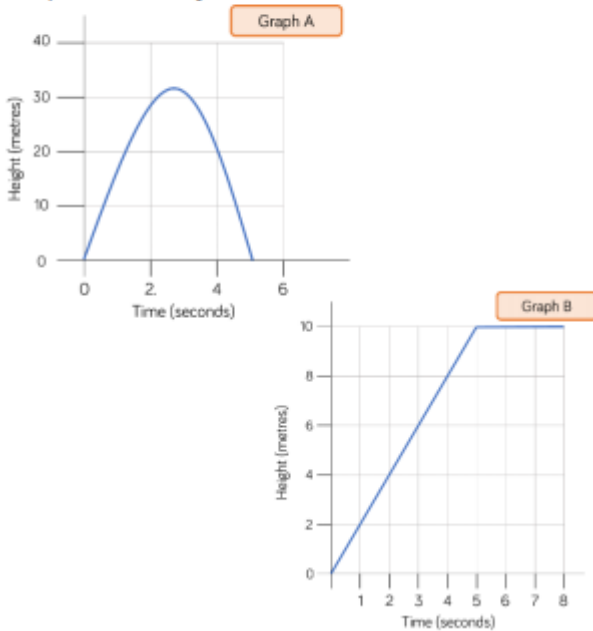
Label the angles. O for obtuse, A for acute and R for right angle.



Can you answer this reasoning and problem solving question?

Jack launched a toy rocket into the sky. After 5 seconds the rocket fell to the ground.

Which graph shows this?  
Explain how you know.



Have a go at answering these questions.  
You could challenge yourself by doing this mentally!

- 1) Write down 3 odd numbers that add up to 19
- 2)  $\underline{\quad} - 4 = 11$
- 3) Write down the number one thousand three hundred and twenty.
- 4)  $21 \div 3$
- 5) Round 827 to the nearest 100.
- 6) What is the perimeter of this rectangle?
- 7) What is the next number in this sequence?  
83, 80, 77, 74, 71,  $\underline{\quad}$
- 8) What is the time in digital?
- 9) Write down a multiple of 4 between 29 and 37
- 10) I have £1. I spend 32p. How much do I have left?
- 11) A ladder is 5  $\underline{\quad}$  tall. Which word is missing?  
mm   cm   m   km
- 12) How many FIVES makes 6 TENS?
- 13) What number comes halfway between 7 and 8?
- 14) How many wheels on 8 cars?
- 15) Half of 52
- 16) The date is the 15<sup>th</sup> August. What was the date 2 weeks ago?

Have a go at these calculations, remember to carry correctly into the correct column.

$$\begin{array}{r} 31 \\ \times 3 \\ \hline \end{array}$$

$$\begin{array}{r} 610 \\ \times 6 \\ \hline \end{array}$$

$$\begin{array}{r} 598 \\ \times 4 \\ \hline \end{array}$$

$$\begin{array}{r} 545 \\ \times 7 \\ \hline \end{array}$$

$$\begin{array}{r} 328 \\ \times 2 \\ \hline \end{array}$$

$$\begin{array}{r} 432 \\ \times 8 \\ \hline \end{array}$$

$$\begin{array}{r} 787 \\ \times 9 \\ \hline \end{array}$$

$$\begin{array}{r} 104 \\ \times 7 \\ \hline \end{array}$$

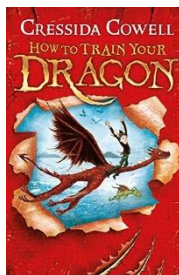
$$\begin{array}{r} 190 \\ \times 3 \\ \hline \end{array}$$

$$\begin{array}{r} 115 \\ \times 8 \\ \hline \end{array}$$

## English/Topic Home Learning Grid

Read for at least 20 minutes every day.

### How to train your Dragon



Using the scanned version of the book or your own copy read the remaining chapters and complete the VIPERS activities, including the writing activities.

All the remaining chapters can be found in Our Learning folder.

#### Reading Vipers

Vocabulary  
Infer  
Predict  
Explain  
Retrieve  
Sequence or Summarise



### Spellings

We have finally reached the end of our spelling list so now it is time to test yourself! Ask your parent/carer to choose ten words from the different spelling lists and test whether you can recall the spelling patterns.

### SPAG

#### Spot the Mistakes!

Go through the PowerPoint 'Spot Mr Whoops' Mistakes' and see if you can correct all of his spelling errors.



### English

As we draw close to the end of term, you are probably starting to think about what it will be like when you return to school. You may have lots of questions to ask your new teacher and they would find it interesting to find out more about you. We would like you to write a letter to your new teacher and you may want to include:

- Your likes/dislikes;
- Hobbies;
- Details about your family, whether you have any pets;
- Your favourite subjects;
- What you need help with at school;
- Your friends at school;
- What you have been doing at home or what you have been learning;
- What you are looking forward to most;
- Any questions you may have for your new teacher!

Click the link below to help you write your letter using paragraphs:

<https://www.bbc.co.uk/bitesize/articles/z2gg4xs>

Send your letter in by email and it will be sent to your new teacher!



## Science

### ELECTRICITY!



Read through the PowerPoint which can be found in our learning folder. Watch the short film within the PowerPoint and using the sheet below as a scaffold/prompt, write the narration to the film.

1. Introduce yourselves and tell the audience what the programme will be about.

2. Tell the audience about non-renewable ways of generating electricity.

Hello and welcome to .....! In this episode we will be....

Some methods of generating electricity are non-renewable. This means...

3. Explain some renewable ways of generating electricity.

4. Give your audience any more information you think they need to know, then thank them for watching.

There are some methods of generating electricity that are renewable, such as...

Thank you for watching .....! We hope...

You may want to use these words to help you:

electricity generate source energy renewable  
non-renewable heat power steam

## Science continued...

Now you know how electricity is made and how reliant we, humans are on it, now think about life without electricity.

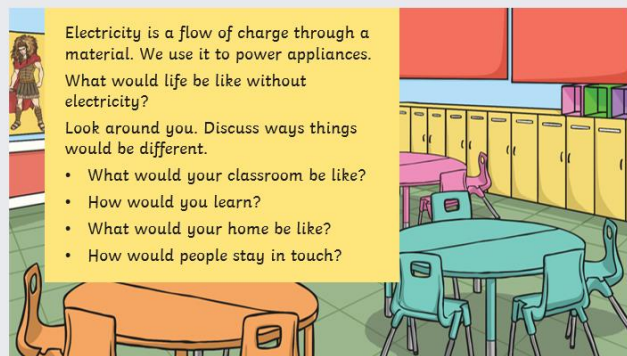
### Life Without Electricity



Electricity is a flow of charge through a material. We use it to power appliances. What would life be like without electricity?

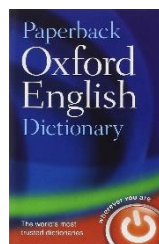
Look around you. Discuss ways things would be different.

- What would your classroom be like?
- How would you learn?
- What would your home be like?
- How would people stay in touch?



What is an appliance?

Use a dictionary to find the definition of this word.



Now armed with a definition, is a thermometer an appliance?

## Science continued...

Mains electricity can be dangerous, causing anything from a minor electric shock, to serious burns and even death!

Look at the picture below, there are 6 potential dangers in this room. The dangers have been numbered. Explain why each one is dangerous.



Once you have finished your narration, play the film back with you narrating over the top of the video.

Perhaps you could even film it...



It's time for a treasure hunt!



Explore your house, can you complete the table below.

The electrical appliances column should be straight forward, as you noted these down last week!

Electrical Appliances	Non-electrical Appliances

## Summer Holidays

If you would like an interesting project to keep you busy over the Summer holidays why not use your amazing imagination and design your own holiday resort!

You can design your resort in a number of different ways:

1. Create a brochure detailing all the different features of your resort.
2. Create a 3D model of your resort
3. Draw a detailed picture of your resort

Think about where your favourite holiday destination would be. Would it be a swimming pool/beach holiday, an active adventurous holiday or even a camping holiday?

Some features you could design:

Swimming pool- fun slides, underground water tubes etc

Games and entertainment areas - hiking, disco, pool table, art and craft room etc

Food areas - ice cream bar, shops etc

Nearby tourist attractions - castles, woodland, beach, water park etc

Let your imagination go wild!

